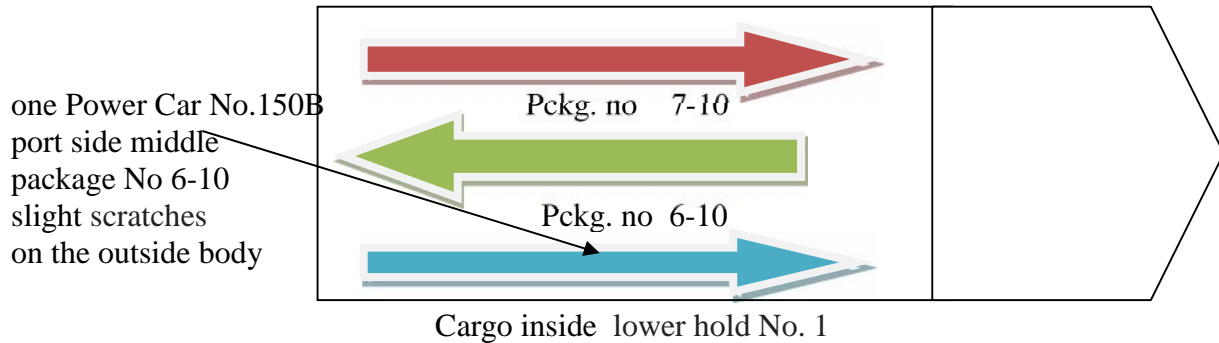


**Damage report
MV THAMESBORG**

Kindly note that we attended on board the ship on today 15.01.2015 at 1500 hrs in order to investigate the alleged damage of the Package no. 6-10 (Power Car No.150B), met ship's Master , Chief Officer.& Agent

As the ship's master stated , Caused the damage on 14.01.15 at 1330 hrs , at the moment of lifting the Package no. 7-10 of lower hold No. 1, because of the lifting equipment for the Package no. 7-10 touch the Package no. 6-10 from port side package caused slight scratches on the outside body. See below diagram.



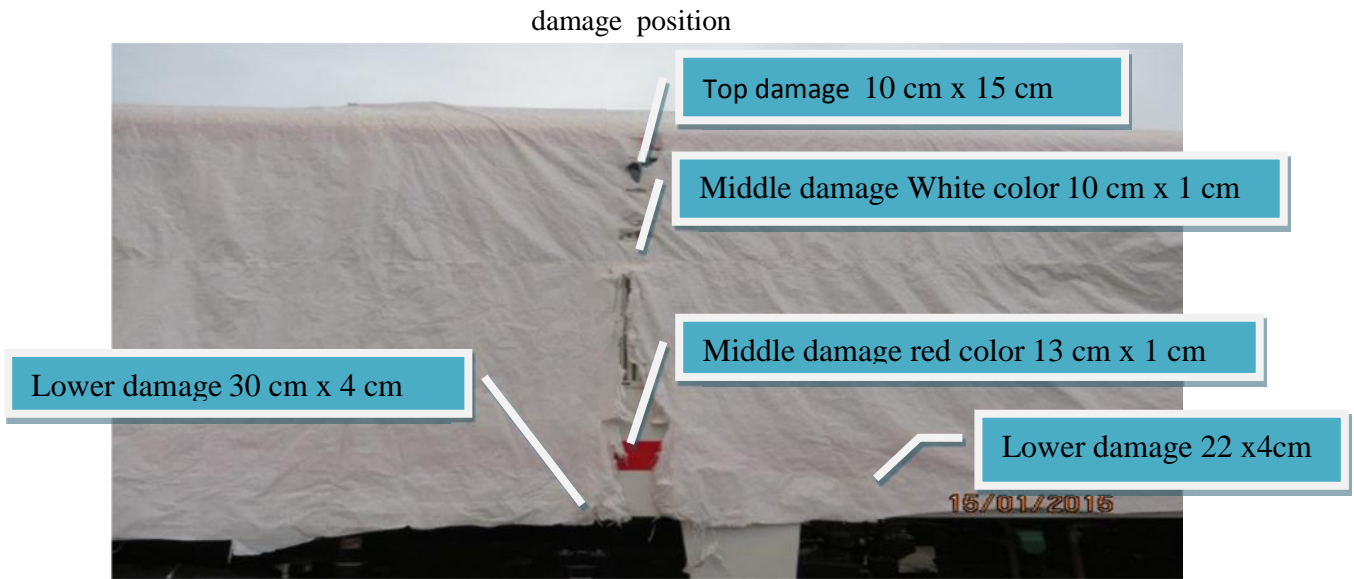
Inspection commenced at Umm Qasr port yard no. 21 at 1615 hrs to 1700 hrs, jointly with the receiver representative Engineer. Mr. Rayad Yuser (Iraqi railways company) , P& I surveyor on behalf ship's owner ch.Eng. Mubder (independent surveyors)

Damage are noted at one Power Car No.150B port side middle package No 6-10, slight scratches on the outside body .

Our survey finding damage as the below:-

- 1- Top damage about 10 cm x 15 cm slight scratches . see picture no.1
- 2- Middle damage White color about 10 cm x 1 cm slight scratches . see picture no.2
- 3- Middle damage red color about 13 cm x 1 cm slight scratches . see picture no.3
- 4- Lower damage about 30 cm x 4 cm deep scratches . see picture no. 4
- 5- Lower damage about 22 cm x 4 cm slight scratches . see picture no. 5

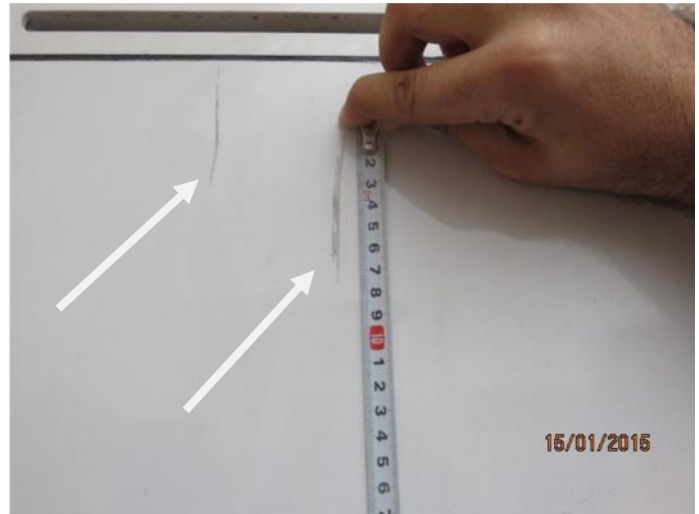
Note:- At Umm Qasr port instructions , if the weigh cargo more than 20 mt . the ship's crew responsible for discharge this cargo , whereas the weigh Power Car more than 20 mt ,but ship's crew don't have equipment for discharge this cargo ,and stevedore



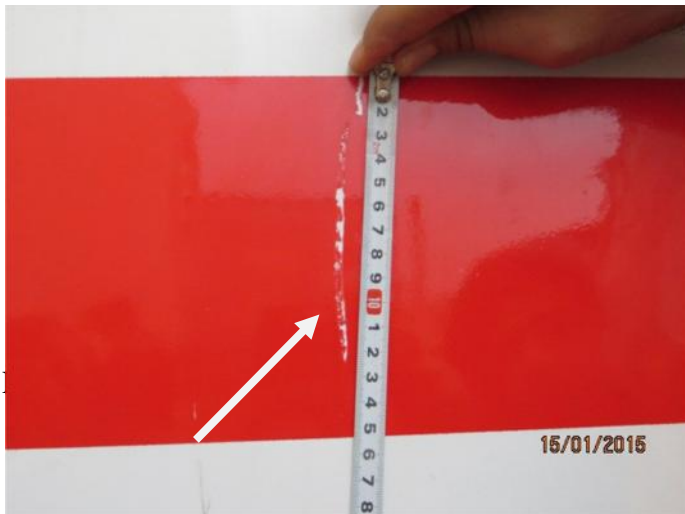
Pictures no.1



Pictures no.2



Pictures no.3



Pictures no.4



Pictures no.5



Capt. Hussain k. Salih
Attending surveyor